

# ULTIMA3

AWE 120-58



Broadband Power  
Wireless Freedom

MULTI-POINT

FIXED WIRELESS ACCESS

POINT-TO-POINT



# SOLUTIONS FOR THE FUTURE

Wi-LAN, the technology leader in Broadband Wireless Solutions, introduces the AWE 120-58 Ultima3 series for service providers and enterprise customers.

Broadband Wireless Access combines the power of broadband with the freedom of wireless. Wireless offers fast deployment, low upfront costs and greater coverage area, making wireless clearly superior to traditional wireline solutions such as DSL or cable.

The Ultima3 benefits from the experience gained in having the largest number of 5.8 GHz multipoint networks deployed today.

Available in three distinct solutions, Wi-LAN's Ultima3 is guaranteed to provide your network unprecedented ease of deployment, simplicity of operation, and the most comprehensive range of features available.



## MULTI-POINT (MP)

From a single Access Point (AP), Wi-LAN's Ultima3 MP solution provides broadband coverage of up to 16 km (10 miles) to 1000 Customer Premise Equipment (CPE). Compatible with previous AWE 120-58s, and including features such as CIR and MBR, the Ultima3 MP gives your network the flexibility to grow with your business.

## RAPID DEPLOYMENT (RD)

When you need a link FAST, the Ultima3 RD is your choice. Truly the easiest point-to-point product available today, its lightweight one-piece design allows for quick installation, giving exceptional performance for links up to 25 km (16 miles).

## EXTENDED RANGE (ER)

Stretch beyond the limits with the Ultima3 ER. Extend your point-to-point networks to ranges up to 75 km (47 miles). Choosing the range you need is as easy as choosing the right antenna for the right job.



**POINT TO MULTI-POINT APPLICATIONS**

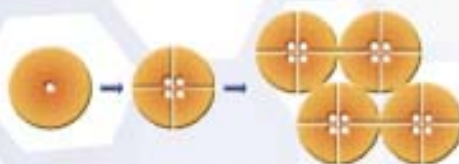
# MEETING YOUR NETWORK NEEDS

## PROVEN

Built on eight years of field-proven patented MC-DSSS (Multi-code Direct Sequence Spread Spectrum) wireless technology, Ultima3 is the only second generation 5.8 GHz product in the market. We listened to the feedback obtained from hundreds of networks worldwide, and designed the Ultima3 to meet your network needs.

## SCALABLE

Ultima3 combined with Tii-Tek's comprehensive range of antennas allows you to grow your network in a flexible manner. Start with a single omni-antenna at the base station, divide into a sectored cell and ultimately expand to multiple cells to satisfy your network growth requirements.



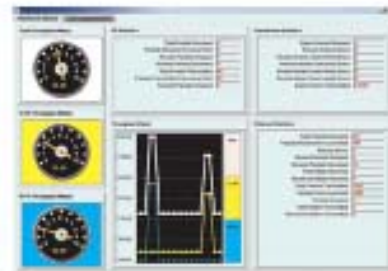
Network Growth

## SECURE

Wi-LAN's Ultima3 is inherently secure due to its DSSS military origin. Patented MC-DSSS technology includes physical layer data scrambling, proprietary data formatting, and special access passwords. Together with RF Grouping, IP Filtering and VLAN, this multi-layer security approach makes Wi-LAN's Ultima3 the right choice for high security applications.

## EASE OF USE

A rugged, weatherproof design eliminates bulky coax cable and accessories while allowing the Ultima3 to be mounted outdoors as well as indoors. A standard off-the-shelf alignment tool makes installation and link setup fast and easy. Ultima3 Web GUI, SNMP and cloning capabilities allow for network operation and maintenance from anywhere in a network.



Web-based GUI

## ROBUST

The Ultima3 constantly monitors and automatically adjusts its output power, seamlessly responding to changes in the operating environment. Optimizing the RF power minimizes interference while allowing maximum frequency reuse, giving you a hassle-free way to establish and guarantee service levels for your wireless network.

Wi-LAN's AWE 120-58 Ultima3 is the only complete solution giving your network the power of broadband with the freedom of wireless.



Enterprise Site 1



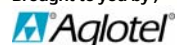
Enterprise Site 2

## POINT TO POINT APPLICATIONS

# SPECIFICATIONS

	<b>Ultima3 RD (Rapid Deployment)</b>	<b>Ultima3 ER (Extended Range)</b>	<b>Ultima3 MP (Multi-Point)</b>
<b>Radio Specifications</b>			
Output Power	-10 dBm to +21 dBm	-10 dBm to +21 dBm	-10 dBm to +21 dBm
Frequency Range	5.725 to 5.850 GHz	5.725 to 5.850 GHz	5.725 to 5.850 GHz
Receive Sensitivity	-80 dBm@BER = 10E-6	-80 dBm@BER = 10E-6	-80 dBm@BER = 10E-6
RF Technology	MC-DSSS	MC-DSSS	MC-DSSS
Wireless Data Rate (Mbps)	12 Mbps raw, 10 Mbps effective	12 Mbps raw, 10 Mbps effective	12 Mbps raw, 10 Mbps effective
Range	Up to 25 km	Up to 75 km	Up to 16 km
Antenna Connector	-	'N' type	AP: 'N' type / CPE: N/A
Certification	FCC/IC	FCC/IC	FCC/IC
<b>Network Support</b>			
Network connection	10/100 BaseT	10/100 BaseT	10/100 BaseT
VLAN (802.1q) Compliance	Yes	Yes	Yes
<b>Wireless Networking</b>			
Network Topologies	Point-to-Point	Point-to-Point	Point-to-Multipoint
RF Collision Management	Polling with Dynamic Time Allocation (DTA)	Polling with Dynamic Time Allocation (DTA)	Dynamic Polling (DP) with Dynamic Time Allocation (DTA)
No. of CPEs per AP	-	-	1000
QoS	-	-	CIR/MBR
<b>Security</b>			
Data Scrambling	User Configurable, up to $4 \times 10^8$	User Configurable, up to $4 \times 10^8$	User Configurable, up to $4 \times 10^8$
Data Security Password	20 Byte Security password (> $10^{48}$ Combinations)	20 Byte Security password (> $10^{48}$ Combinations)	20 Byte Security password (> $10^{48}$ Combinations)
<b>Management</b>			
Remote Management	SNMP, TELNET, Web GUI	SNMP, TELNET, Web GUI	SNMP, TELNET, Web GUI
Management Port	RS 232 Serial Port	RS 232 Serial Port	RS 232 Serial Port
<b>Electrical/ Mechanical/ Environmental</b>			
Power Consumption	Max 14 W	Max 14 W	Max 14 W
Dimensions	30.5 x 8.9 x 30.5 cm (12.0 x 3.5 x 12.0")	19.1 x 7.8 x 22.9 cm (7.5 x 3.0 x 9.0")	AP: 19.1 x 7.8 x 22.9 cm (7.5 x 3.0 x 9.0") CPE: 30.5 x 8.9 x 30.5 cm (12.0 x 3.5 x 12.0")
Weight	3.6 kg (7.92 kg)	3.0 kg (6.6 lb)	AP: 3.0 kg (6.6 lb) / CPE: 3.6 kg (7.92 lb)
Operation Temperature	-40°C to 60°C	-40°C to 60°C	-40°C to 60°C
Enclosure	Fully weather proof	Fully weather proof	Fully weather proof

Brought to you by:



Aglotel (M) Sdn. Bhd.  
No. 34, Jalan BP 6/13,  
Bandar Bukit Puchong  
47100 Puchong,  
Selangor Darul Ehsan  
Malaysia

Tel : +603-8068 2880, Fax : +603-8068 2887  
www.aglotel.com.my

